



Secondary Use of Health Data in Finland

Dr Päivi Sillanaukee,
Ambassador for Health and Wellbeing
Ministry for Foreign Affairs



Why Finland?



**MAINTAINING
HEALTH &
WELLBEING**

**PERSONALIZED
HEALTH**

**CONTINUOUS,
VALUE-BASED
HEALTHCARE**

**DIGITAL
TRANSFORMATION,
SMART HEALTH**

**INCREASE OF
DATA**

Governmental
backing

Most efficient health
care system

Innovation friendly
legislation

Public private
cooperation model

National health
registers

National centers
of excellence

Flexible business
environment
Buzzing start up culture

Culture of trust

Highly educated
citizens and experts

Global leader in
digital health

Biobanks
Access to data

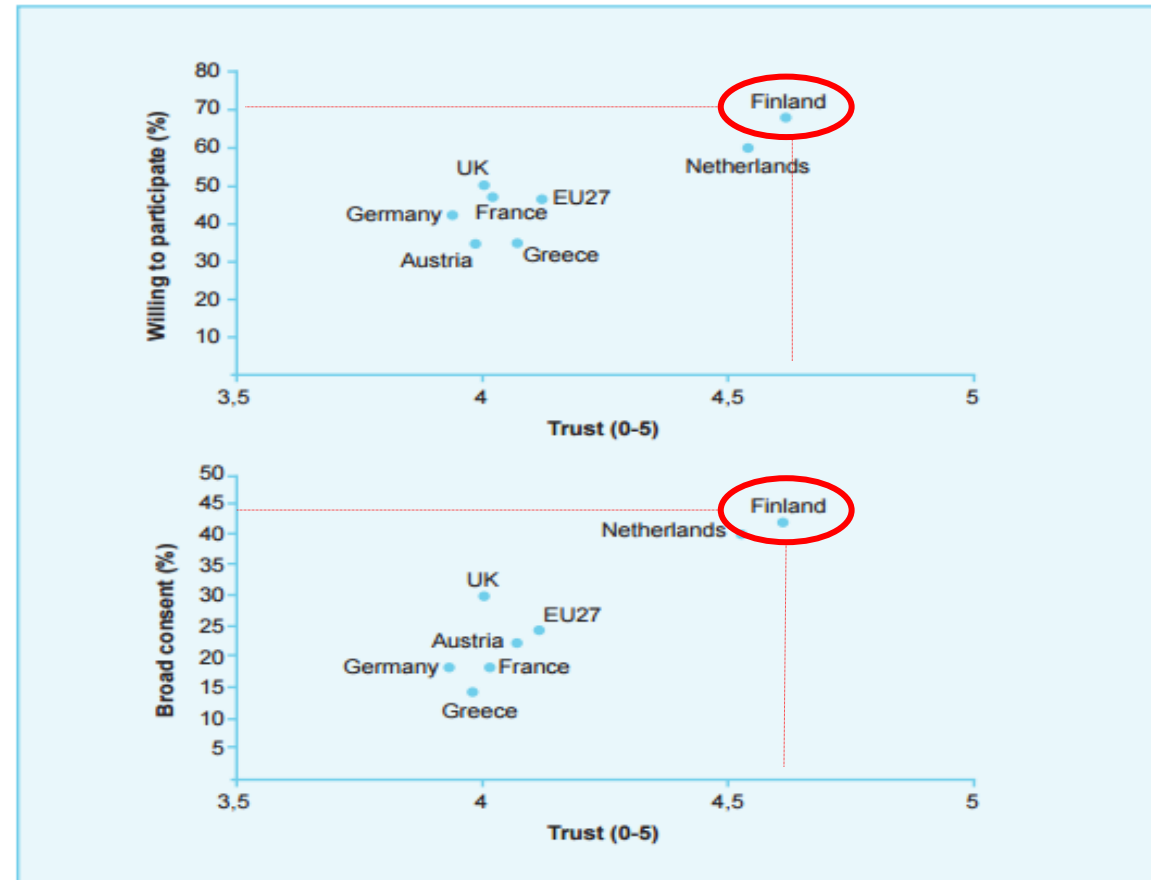
Unique genetic ancestry

Positive Health tech
trade balance

FINLAND IS A TRUST-BASED SOCIETY



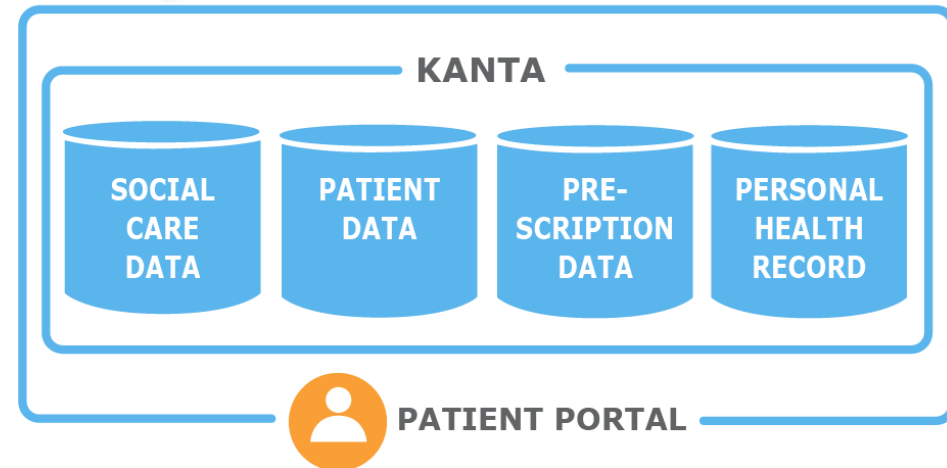
The **TRUST** of the citizens is crucial for the development of the data-based health care innovations



FINLAND HAS 100% ELECTRONIC MEDICAL RECORDS DIGITALLY ACCESSIBLE VIA KANTA SERVICE

- Patient, social care and prescription data gathered in a national databank.
- Healthcare professionals can access the needed data nationwide, store patient records and make prescriptions.
- Citizens can browse own medical records and prescriptions and order repeat prescriptions in the online service.

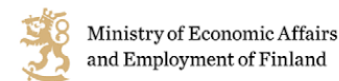
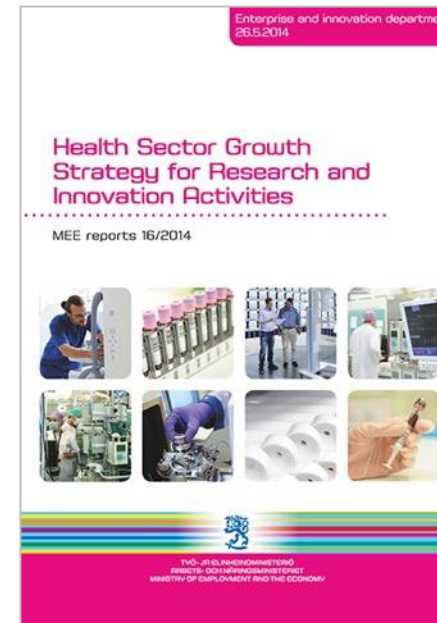
KANTA is an entity of digital services, which brings benefits for citizens, pharmacies and the social welfare and healthcare sector



GOVERNMENT'S HEALTH SECTOR GROWTH STRATEGY - TOWARDS A NATIONAL DATA-BASED INNOVATION ECOSYSTEM

Political commitment of Finland to be

- An international hub of versatile and high quality scientific research, inventions and innovations.
- A global partner in public-private collaboration
- A dynamic operating environment for new companies.
- A reliable partner for the international growth of companies.
- An attractive target country for health sector investment.
- A model country of sustainable personalized healthcare.



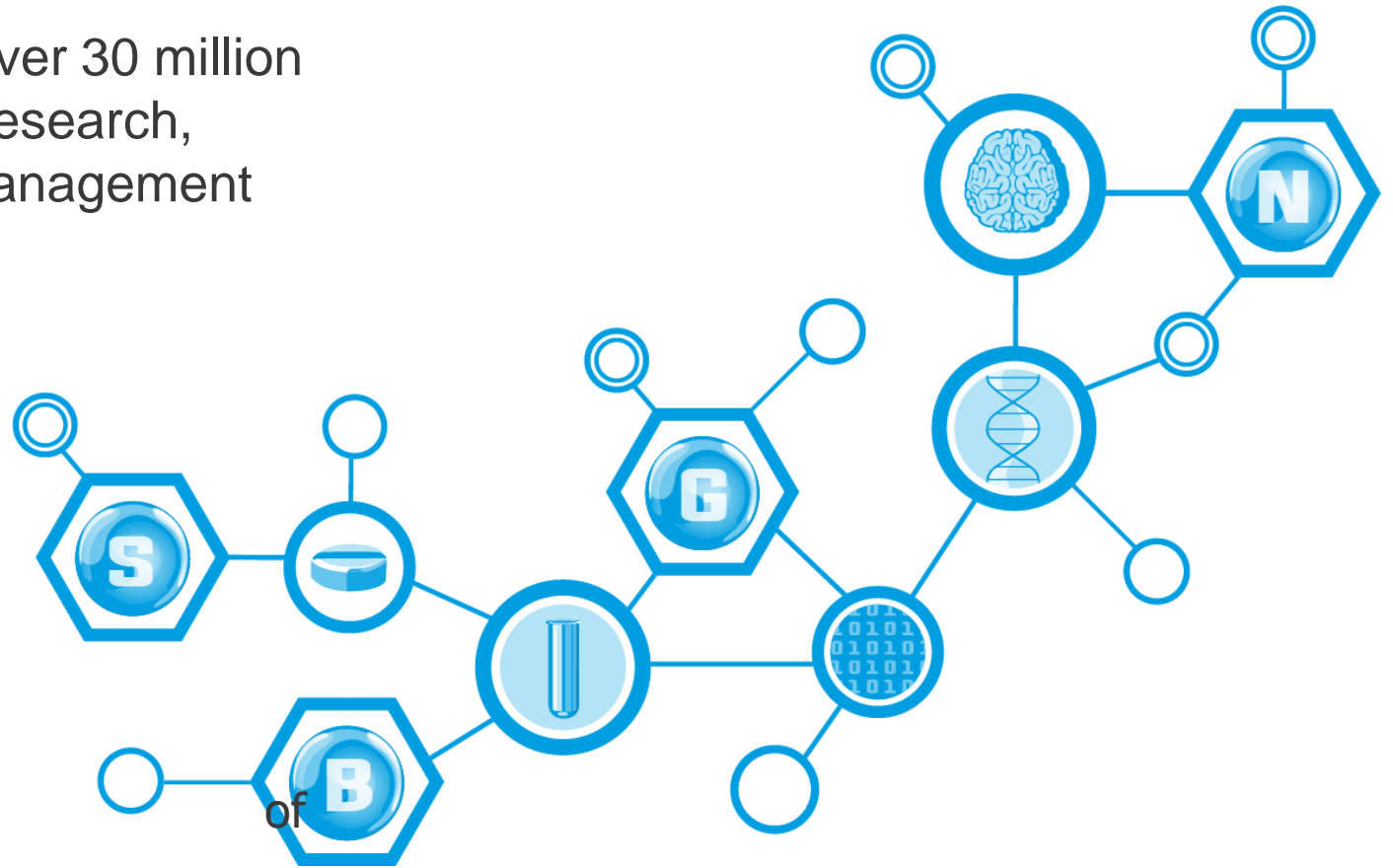
Centers of excellence

- Highest-class knowhow, research and education

Finnish government is investing over 30 million euros for personalized medicine research, innovation, education and data management centers of excellence.

Establishing

- National Cancer Center FICAN
- Genome Center
- Pharmaceutical Development Center
- Neurocenter
- Enhancing the joint activities of the biobanks



Enabling legislation

BIOBANK LAW

2012

Enables faster
drug discovery and
clinical trials

Access to high quality data and
biological specimens

ACT ON THE SECONDARY USE OF HEALTH AND SOCIAL DATA

2019

Enables authorities,
institutes and companies secure
access to the health and
social data in Finland

DATA: National one stop-shop

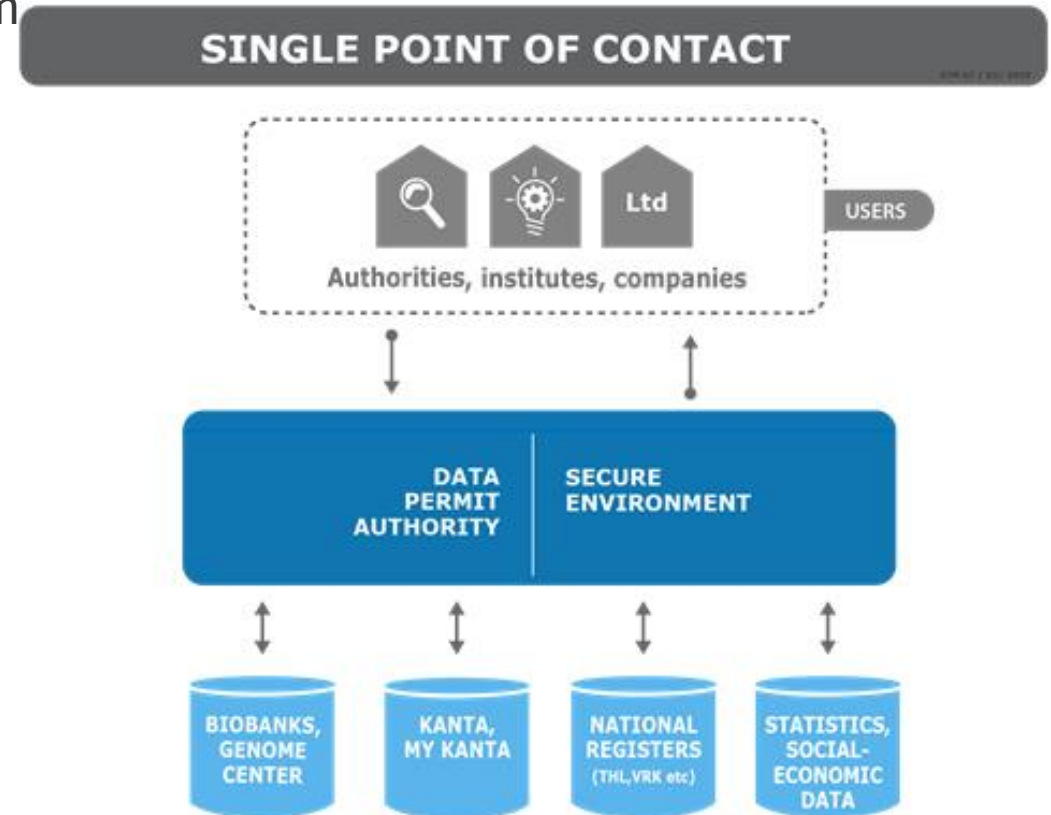
FOR THE SECONDARY USE OF HEALTH AND SOCIAL DATA

- Findata grants permits when data are requested from multiple registers
- Collect and process the data
- Provide the data in a secure IT environment for data users
- Help desk for data users

Findata goals

- Enable effective and safe processing and access to data
- Eliminate overlapping administrative burden
- Enhance data protection and security
- Improve register data quality

FINDATA



Fingenious® Service

A digital gateway to Finnish biobanks and biomedical research – the 1st in class service in Europe.



Built to serve academic and industry researchers and to advance medical research globally.



A single point of contact for all public biobanks and their samples and data.

One contract with all the biobanks via Finnish Biobank Cooperative – FINBB.



FINNGEN INNOVATION ECOSYSTEM



Coordinating partners:



Finnish partners



Funding partners:



InFLAMES in a nutshell



inflames@utu.fi
<https://inflames.utu.fi/>
[@InFLAMES_Health](#)

InFLAMES

InFLAMES belongs to the Academy of Finland's Flagship Programme, which supports high-quality research and increases the societal impact emerging from the research.



Consortium of 2 Universities

- University of Turku
- Åbo Akademi University



50 Group Leaders

- 30 Professors and 20 Senior Researchers



Over 300 Researchers



Approx. 70 Doctoral Candidates

- [InFLAMES Doctoral Module](#)
- Industrial PhD programme



12 Visiting Professors

- Top international researchers



2 Professors of Practice



Steering Committee and Scientific and Impact Advisory Board



High quality research infrastructure



Unique innovation network and ecosystem

- 12 Spin-off companies
- 12 Large pharmaceutical companies
- 7 Public partners

InFLAMES

Areas of expertise

PLATFORMS

- leukocyte differentiation
- immune activation
- leukocyte migration
- humanized mouse models

IMMUNOLOGICAL DISEASE MODELLING

- genomics, transcriptomics, proteomics
- single cell omics
- bioimaging
- computational tools for data analyses

DEEP IMMUNOPROFILING

- structure-based drug development
- small molecule drugs
- biological drugs

IMMUNODRUG DEVELOPMENT

PILOT STUDIES including CLINICAL TRIALS

- detection of inflammation in PET
- novel tools for diagnostic tests
- biomarkers for inflammatory diseases
- precision immune medicine (Molecular Immunology Board)

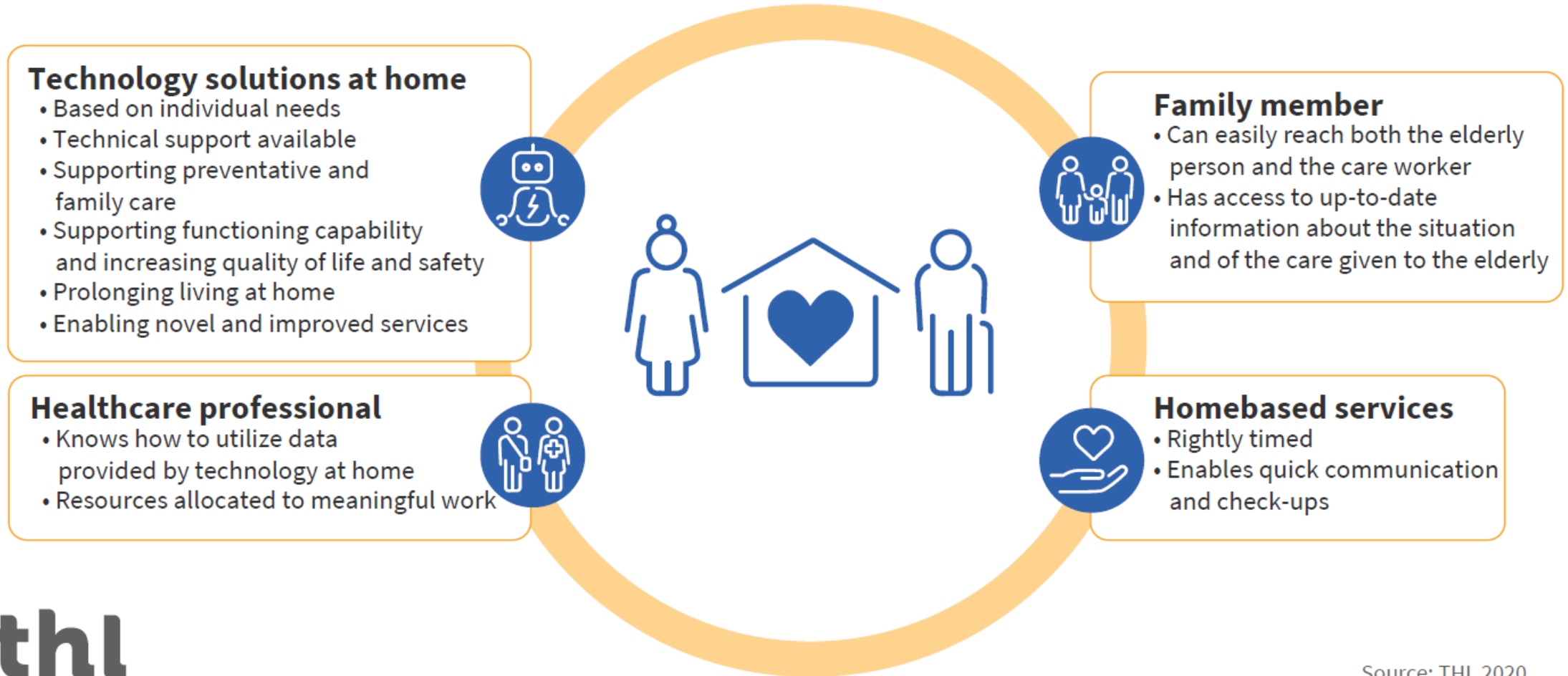
IMMUNODIAGNOSTICS

- new treatments for inflammation and infections
- future vaccinations
- immuno-oncology
- new targets

IMMUNOTHERAPY

Technology supporting smart ageing and care at home

KATI programme - vision



thl

Thank you!



Dr. Päivi Sillanaukee

Ambassador for Health and Wellbeing

Ministry for Foreign Affairs

paivi.sillanaukee@formin.fi