

Managed Modern Workplace

Service und Verfügbarkeit, neu definiert.



Your local provider for
global enterprise mobility

schiff1



GEMA International

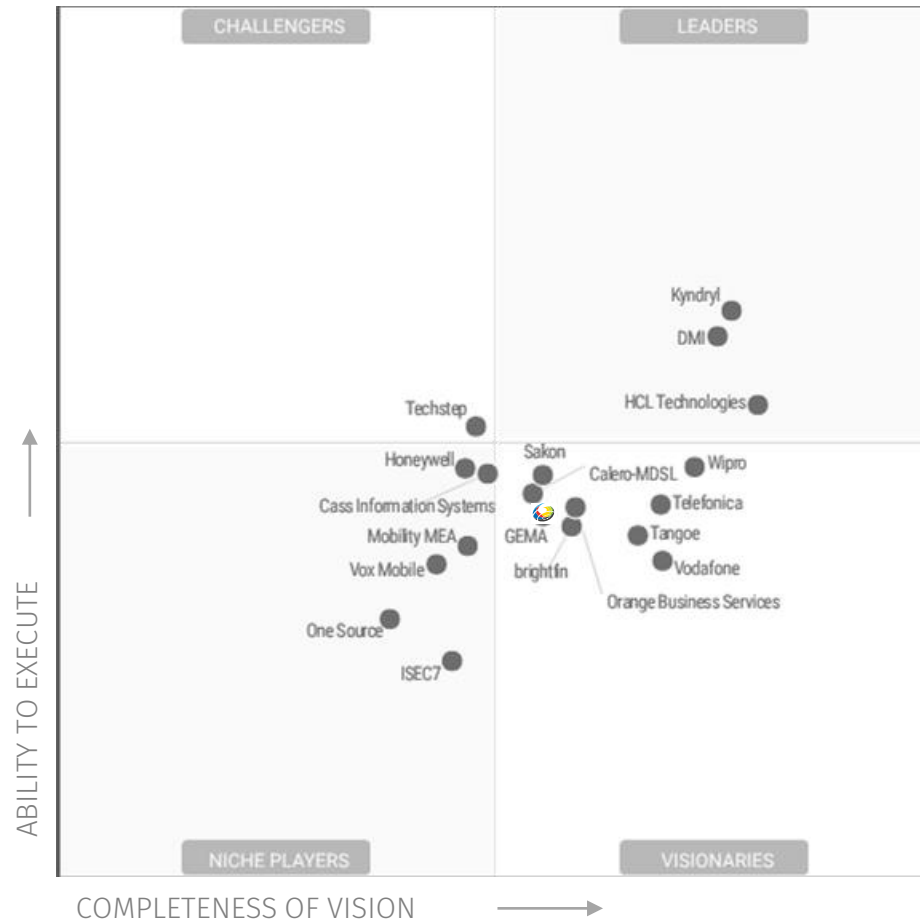
GEMA ist Spezialist für Enterprise Mobility und End User Productivity als Teil einer Unternehmensgruppe mit mehr als 1.300 Mitarbeiter:innen in 23 Ländern.

Gemeinsam mit unseren Lizenznehmern in 60 Ländern stellen wir unseren Kunden die Basis für mobile Arbeit bereit: Mit einem weltweit identischen Vor-Ort-Service in nativer Sprache.

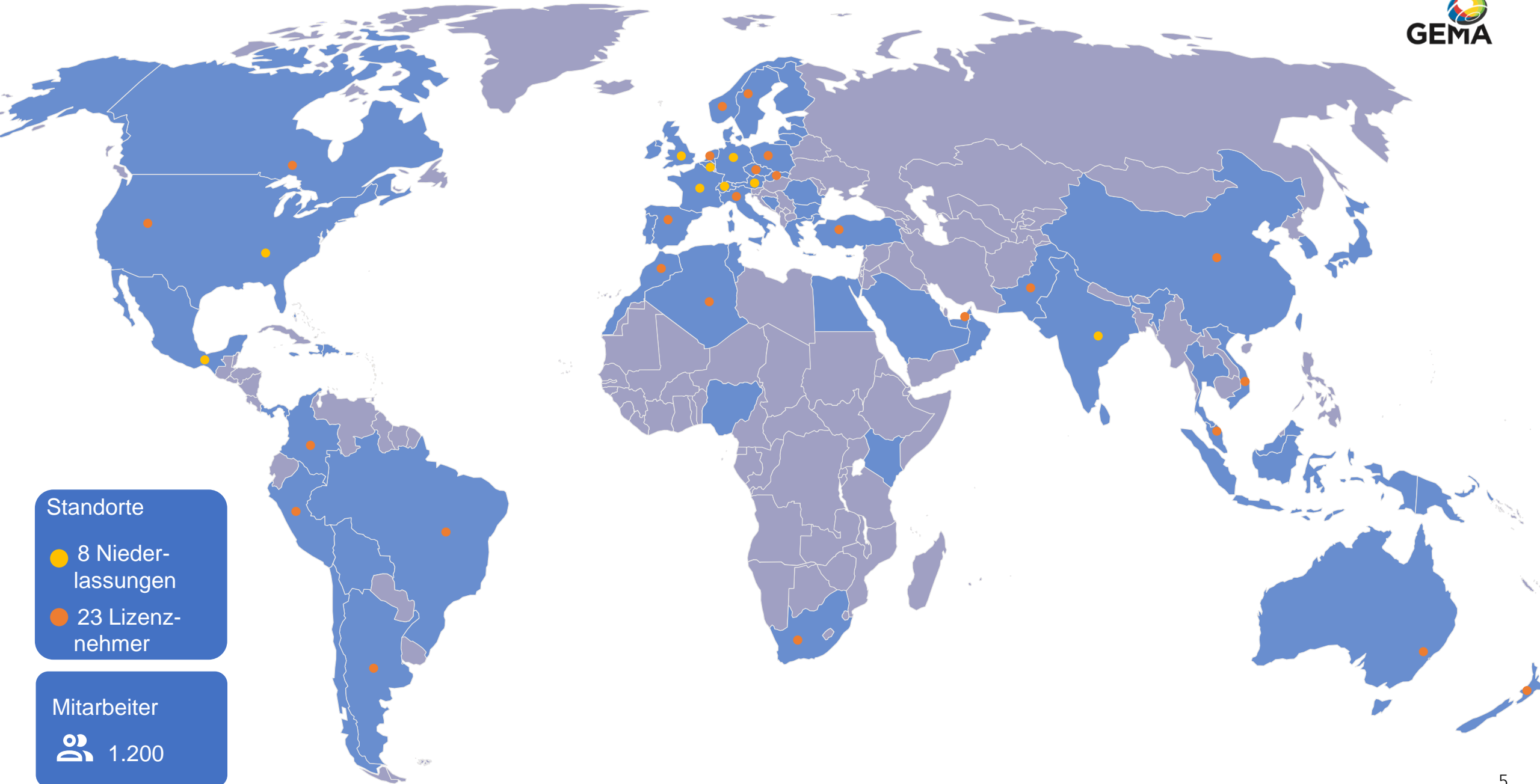
Diese hohe Qualität sichert uns seit 9 Jahren in Folge einen Platz im „Gartner Magic Quadrant for Managed Mobility Services, Global“.



Gartner Magic Quadrant for Managed Mobility Services Global



2022 zum 9. Mal in Folge im Gartner Magic Quadrant (2023 ausstehend)



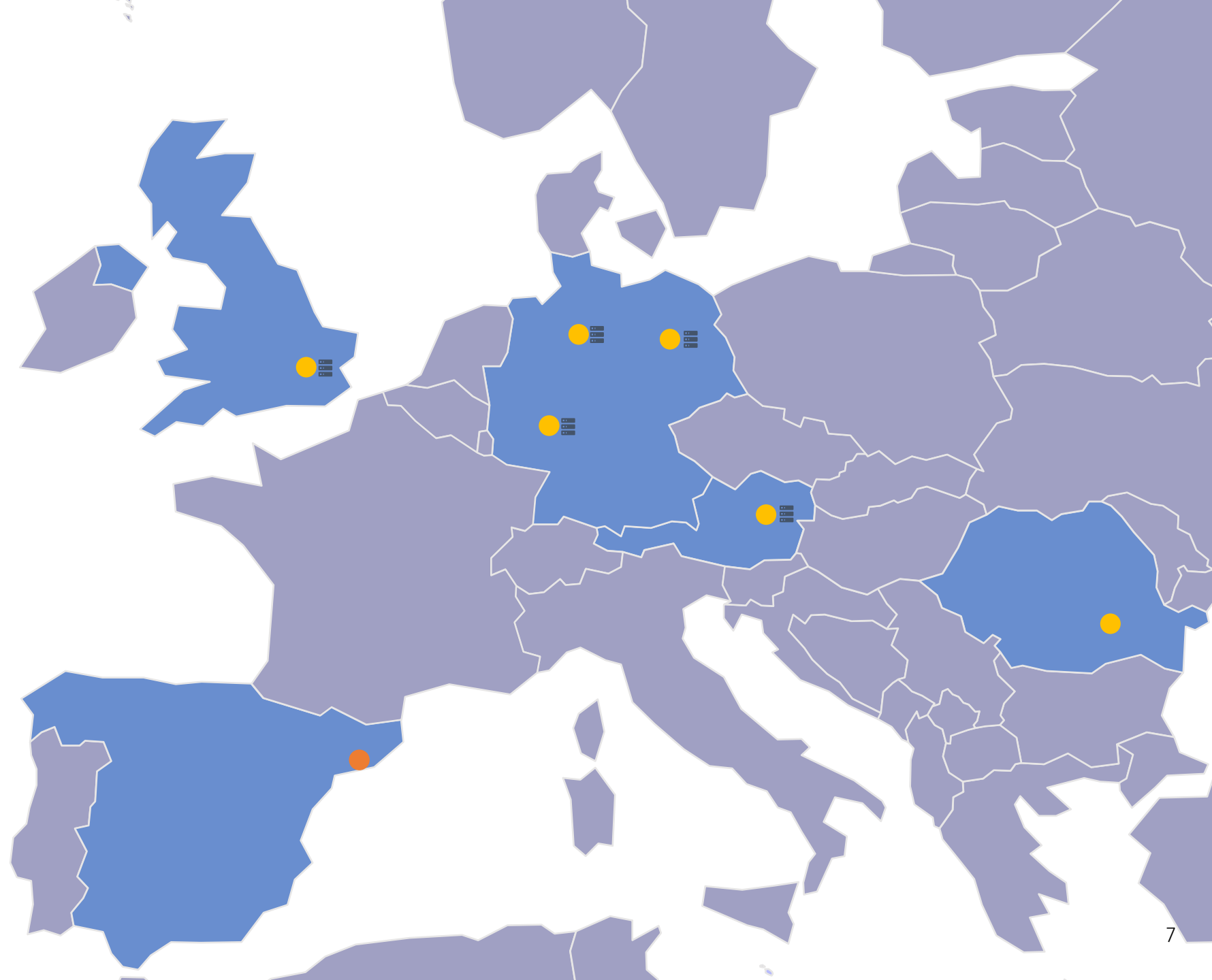
schiff1

SCHIFFL IT ist Spezialist für Managed-Multi-Service-Plattformen und End User Productivity in Europa.

Als Teil einer internationalen Unternehmensgruppe mit mehr als 1.300 Mitarbeiter:innen in 23 Ländern betreut SCHIFFL IT europaweit Kunden.

Auf eigenen Flächen in zertifizierten europäischen Rechenzentren übernehmen wir alle Aufgaben vom Design bis zum voll gemanagten Betrieb Ihrer Cloud Umgebung. Mit drei Jahrzehnten Erfahrung geben wir unseren Kunden damit Rückendeckung in allen Fragen zur IT Infrastruktur.





schiff1

Standorte

- aktuell
- geplant
- 🏢 inkl. RZ

Mitarbeiter

👤 140

Lösungsportfolio



**Managed
Cloud**



**Managed
Security**



**Managed Unified
Communications
and Collaboration**



**Managed
Modern Workplace**

EMM as a Service



Betrieb und Management von EMM Plattformen

- Automatisierte Migration von unterschiedlichen Plattformen
- Lizenzmanagement
- 2nd / 3rd Level Support
- Plattform Workshops

GEMA Enterprise Mobile Lifecycle

- Procurement (Order and Assetmanagement)
- Deployment (Devices incl. Personalization and Shipment)
- Break & Fix (Deployment of replacement devices)
- Support & Servicemanagement (After Deployment Support)
- First Level Support
- Maintenance Contract (Management EMM Solutions)

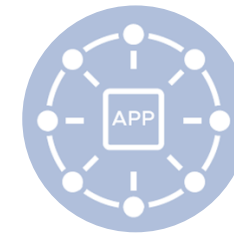
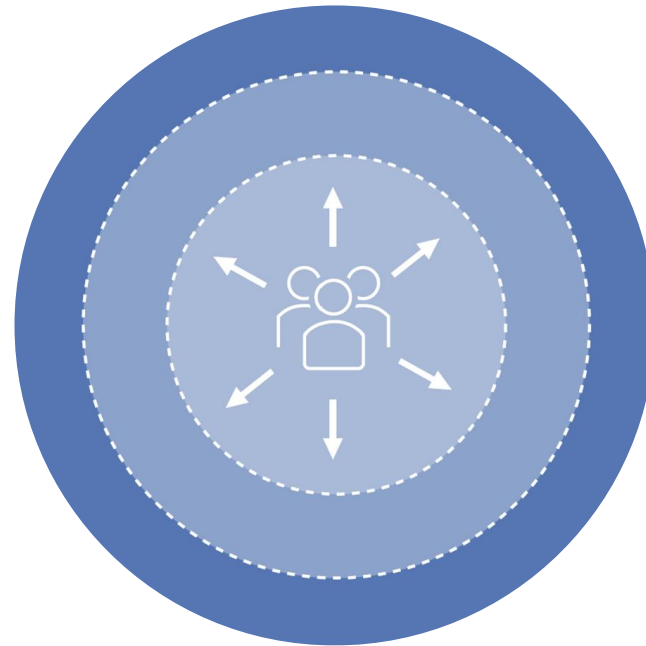
HYBRIDES ARBEITEN MIT SICHERHEIT



Hybrider Arbeitsplatz

spätestens seit der Pandemie sind Zugriffe von überall nach überall gefordert

**Flexible
Wokstyles**

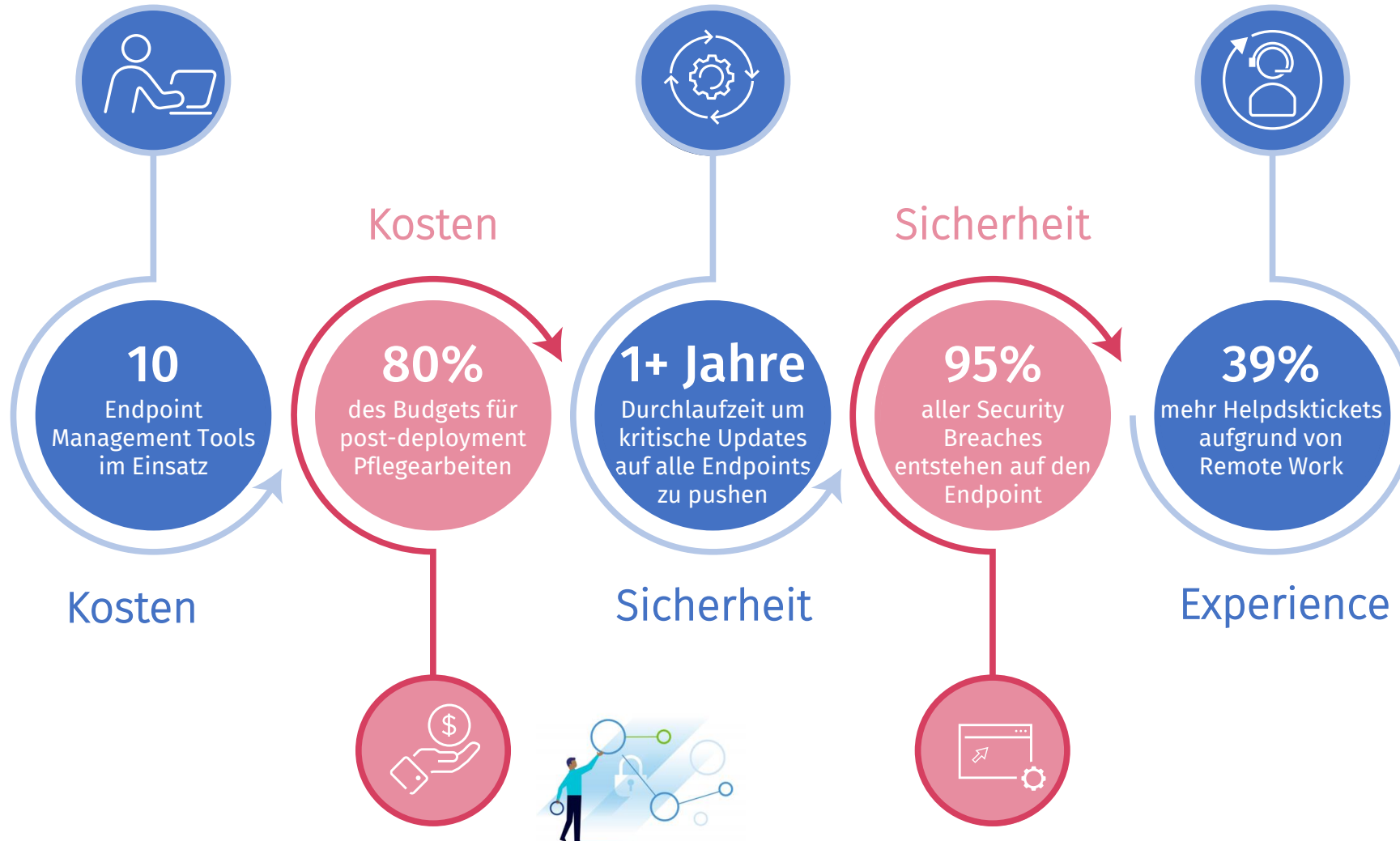


**Applications
Everywhere**

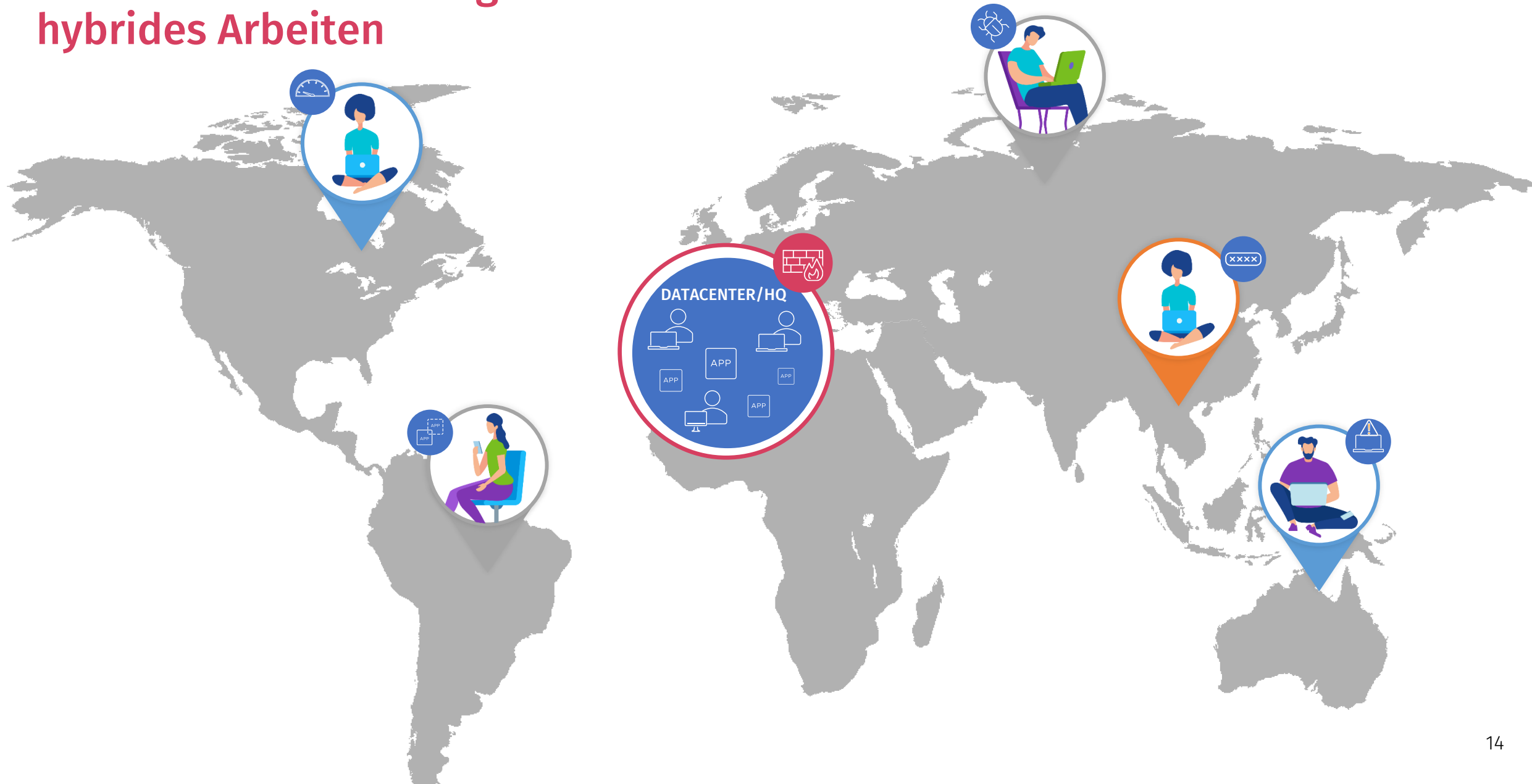


**Endpoint
Choice**

Endpoint Management birgt erhebliche Herausforderungen



Sicherheitsanforderungen an hybrides Arbeiten

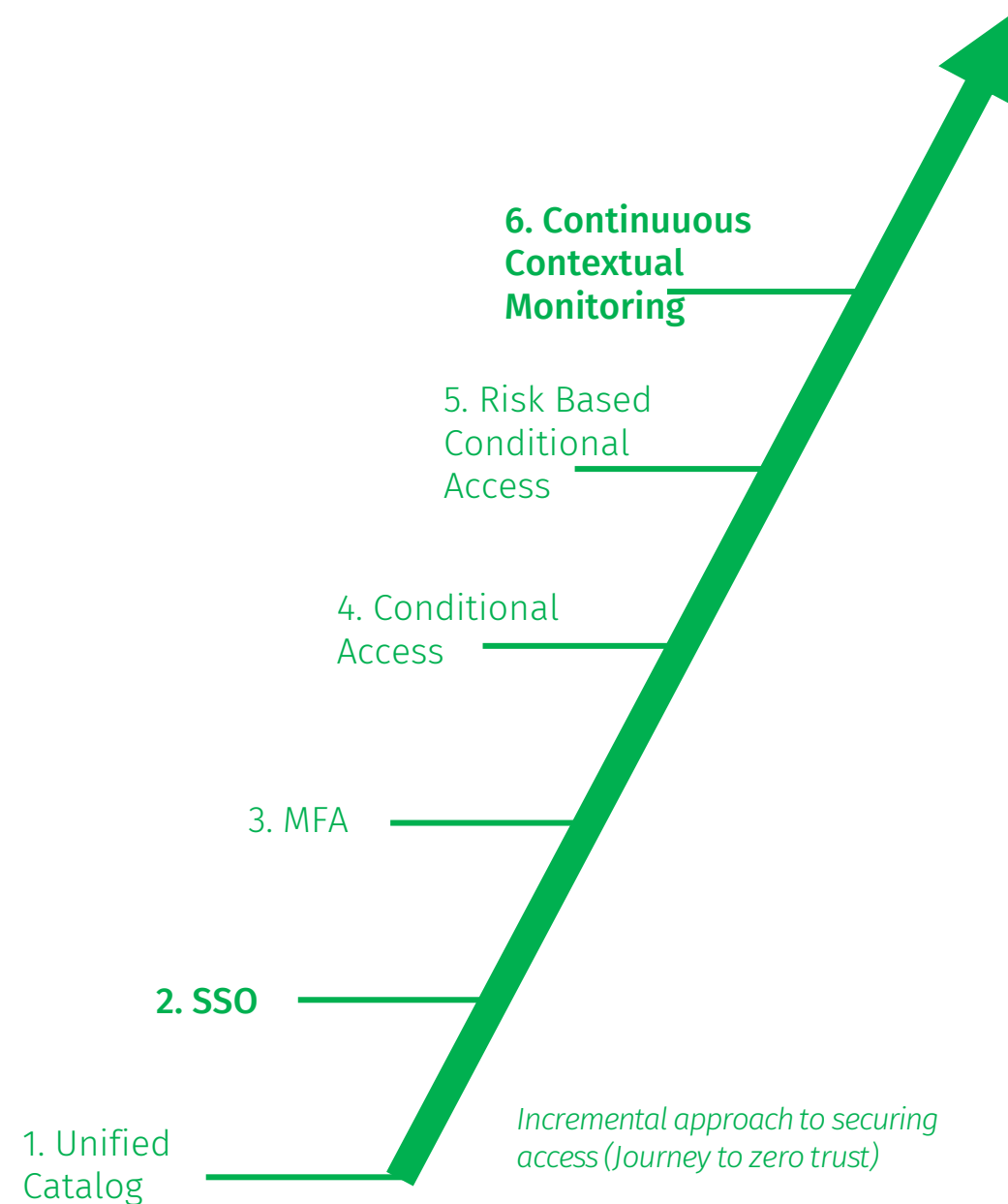


DER WEG ZUR LÖSUNG



Der Weg von SSO zu Zero Trust

- Die Implementation ist ein inkrementeller Prozess
- Starten Sie mit User Experience durch einen einheitlichen Katalog und SSO
- Augmentieren Sie die Security mit MFA und transparentem Sign On
- Integrieren Sie eine intelligente Datenanalyse zur Risikoanalyse und zum kontextuellen Monitoring





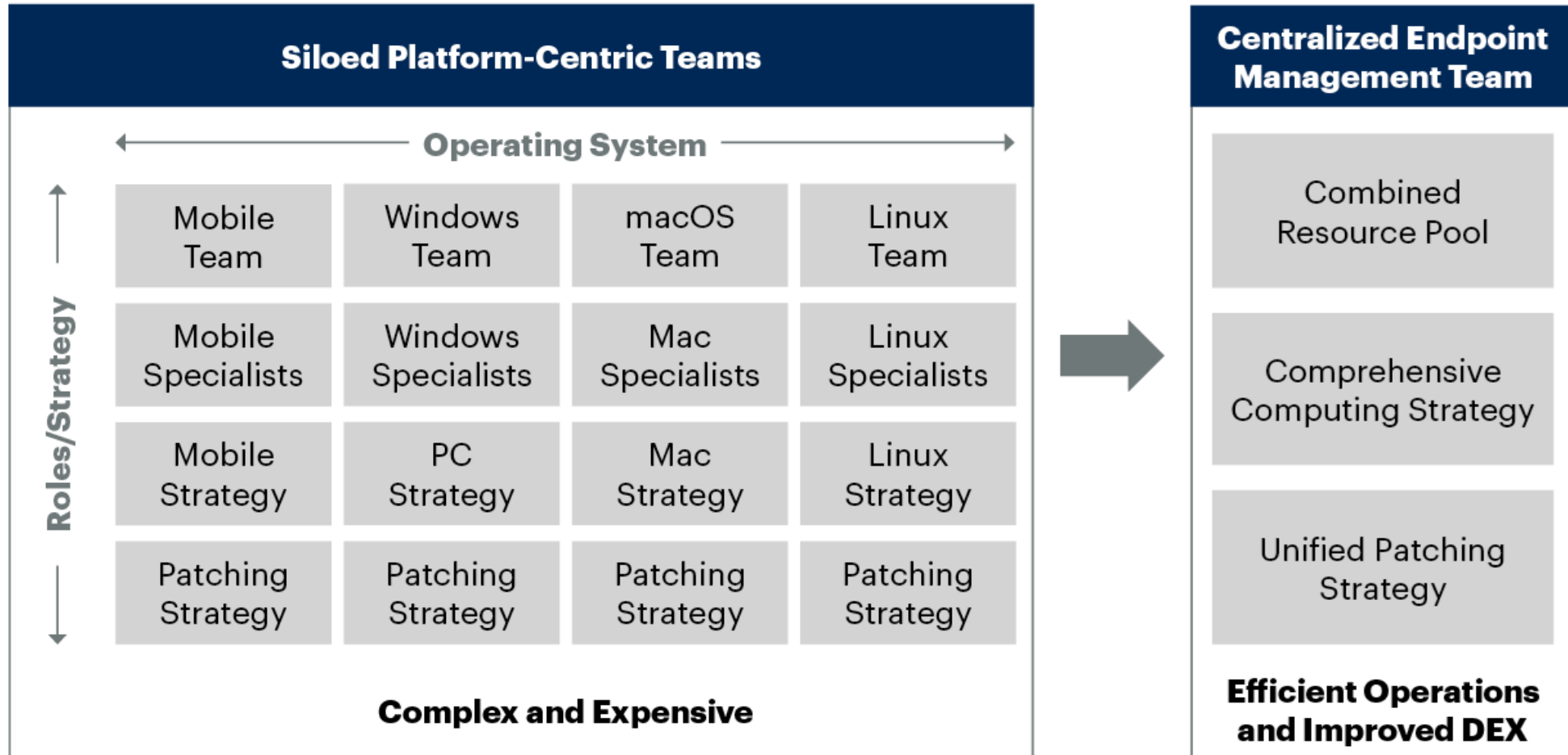
**Organizations with unified
endpoint management tools
score 70% higher overall
than those that have not started the journey.**

(revealed by data collected via
Gartner's Digital Workplace Maturity Assessment Tool)

Three Keys to Effective Endpoint Operations (Gartner)



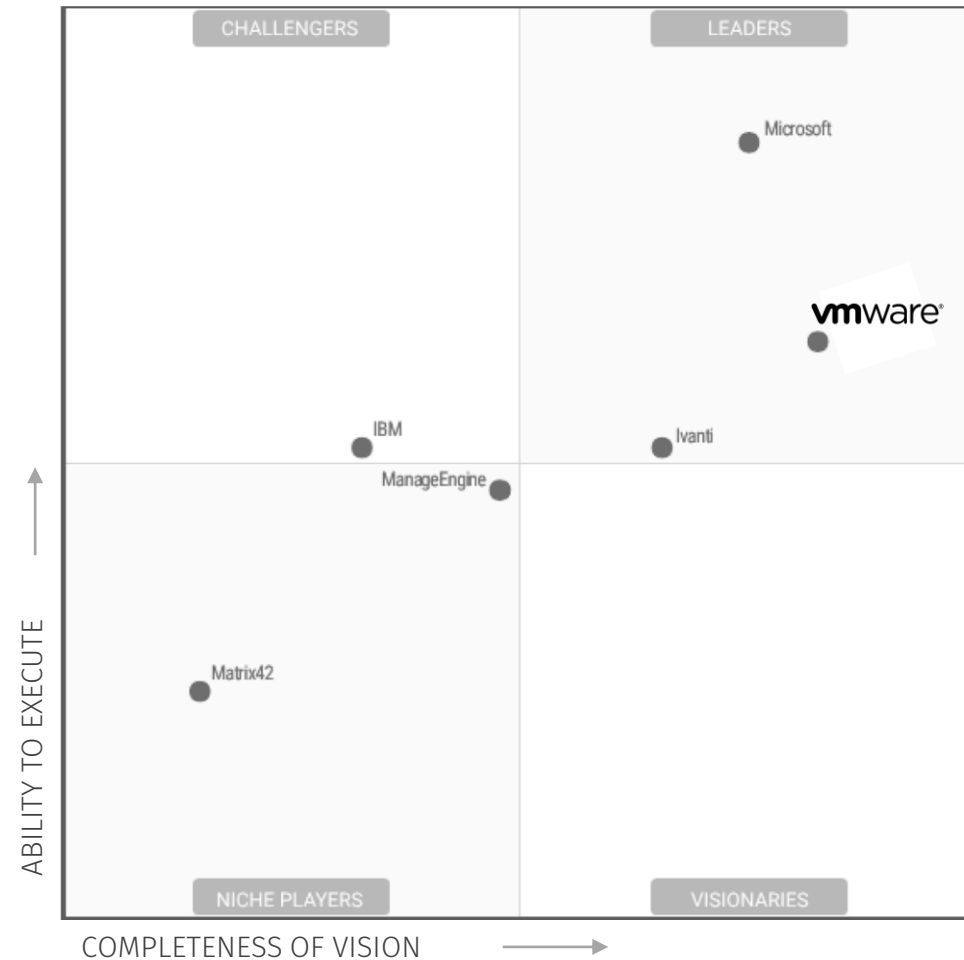
Consolidate Teams for Increased Efficiency and DEX (Gartner)



The image shows a busy public space, possibly a transit station or a shopping mall, with a large purple overlay. The background is a blurred photograph of a crowded area with people walking and stairs. The text "EIN TOOL FÜR ALLES?" is written in white, bold, sans-serif font on the left side of the purple overlay. The text is positioned over a staircase and a walkway. The overall scene is vibrant and suggests a modern, active environment.

**EIN TOOL
FÜR ALLES?**

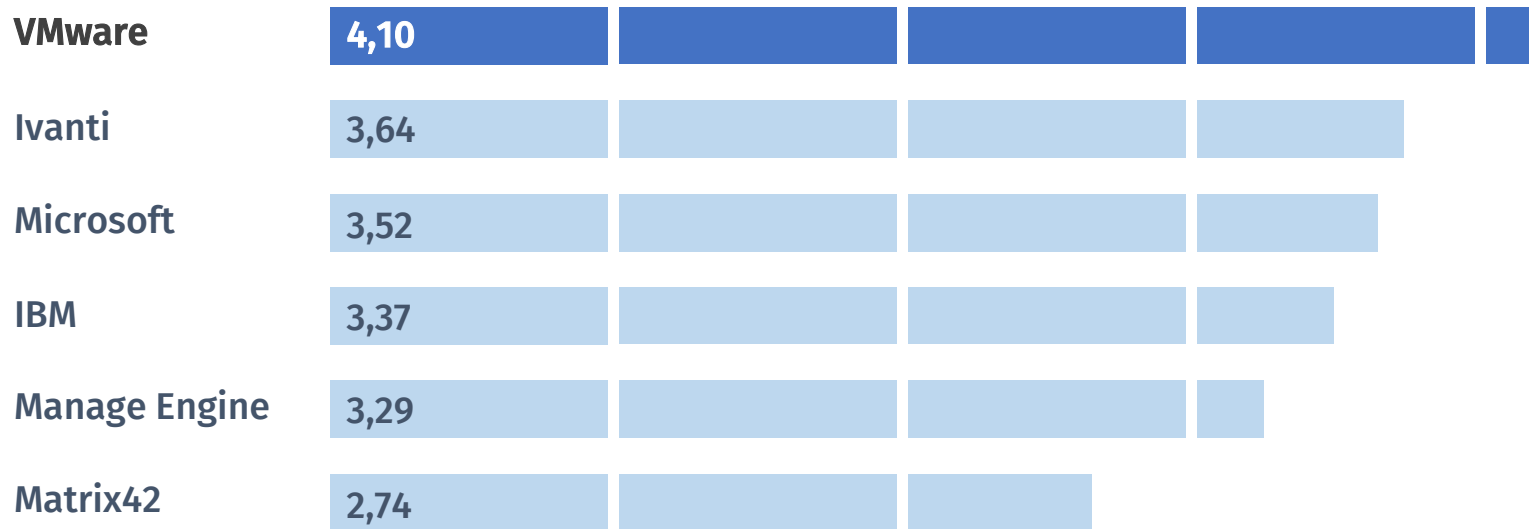
Gartner Magic Quadrant: Unified Endpoint Management Tools



UEM – Global Capabilities (Gartner)

Product or Service Scores for Security-Centric Management (as of June 1, 2022)

Vendors' Product Scores for the Security-Centric Management Use Case:



Erlaubt freie Gerätewahl, automatisierte Installation und Zugriffe mit Fremdgeräten



Employee Experience Enablers in UEM

Device choice

BYOD/COPE

Drop Ship Provisioning

Cloud-based management

Any Endpoint



Desktop, Mobile, Rugged, Virtual, IoT

On Any Platform

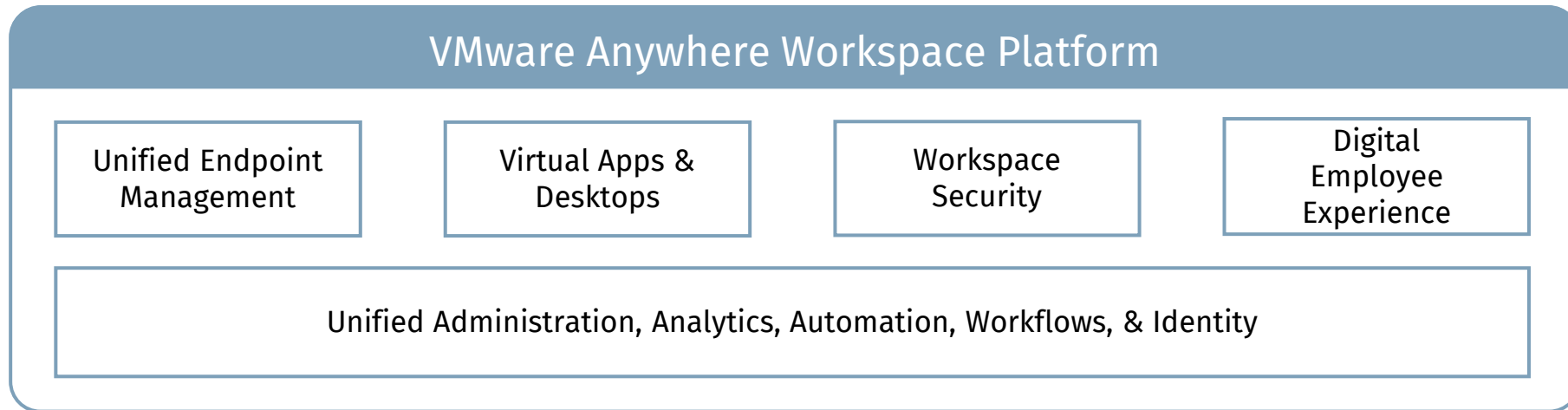


Across Any Use Case



Möglichkeit zur erfolgreiche Implementierung von Hybriden Arbeitsplätzen

Eine gesamthafte moderne Lösung innerhalb der Anywhere Workspace Platform:



branchen-
führend



Employee Experience

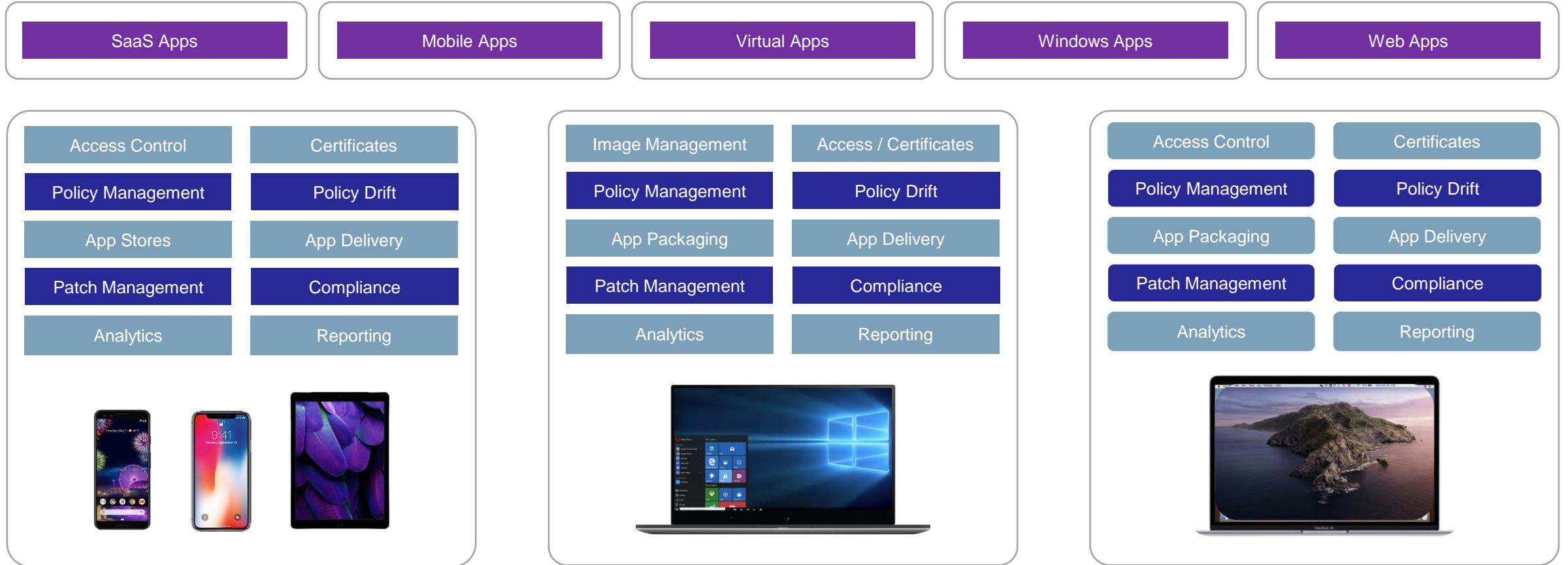


Security

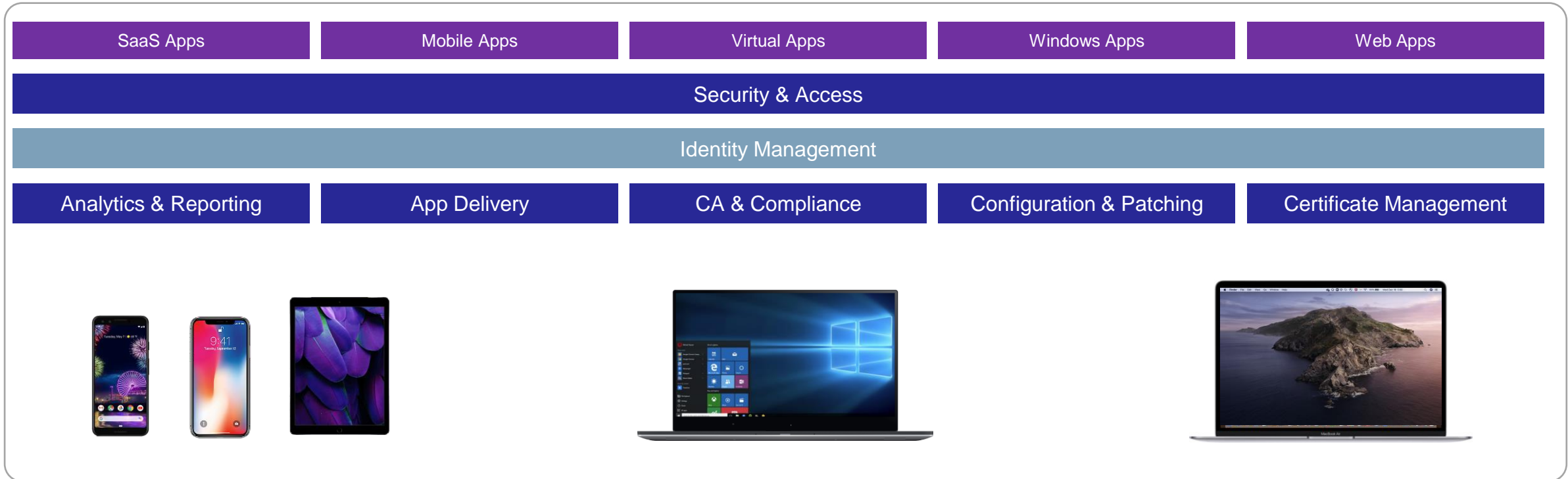


IT Modernisation

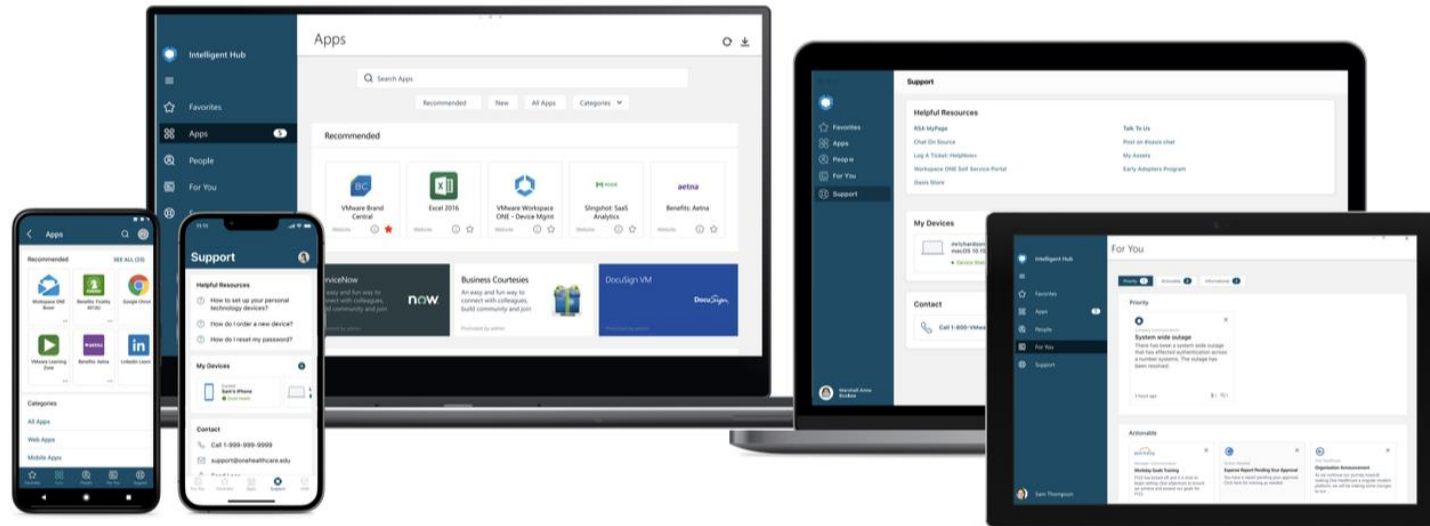
Zentrales Management Frontend für alle Endpoints



Zentrales Management Frontend für alle Endpoints



Zugang zu Apps und Unternehmensressourcen von jedem Ort



Single
Sign-On

Self
Service

Remote
Support

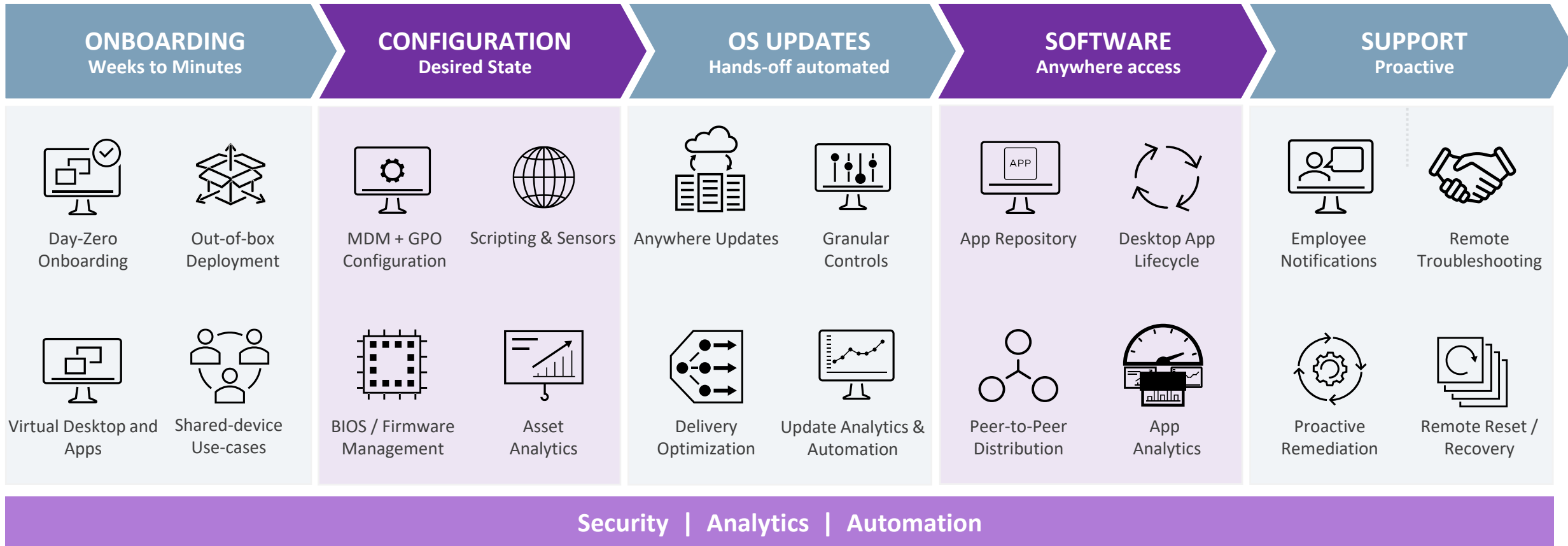
Experience
Workflows

IT and HR
Communications

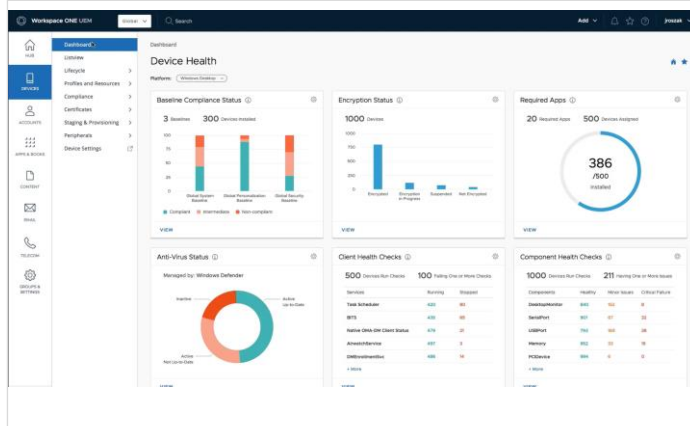
People
Search

Standalone Employee Life-Cycle Experiences | VMware managed, BYO/unmanaged and 3rd party managed devices

True Desktop Modern Management

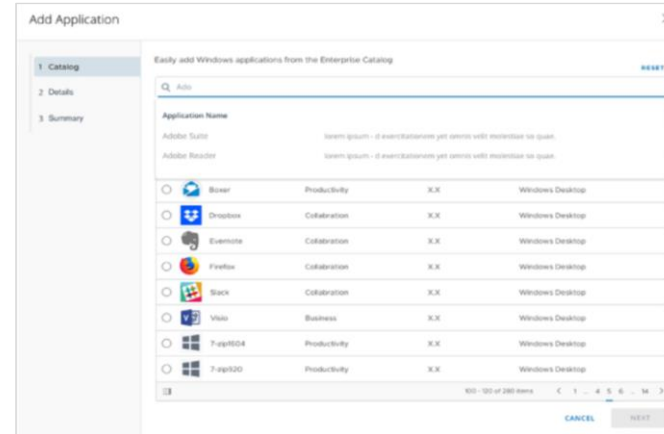


Modernisierung von Ressourcenbereitstellung



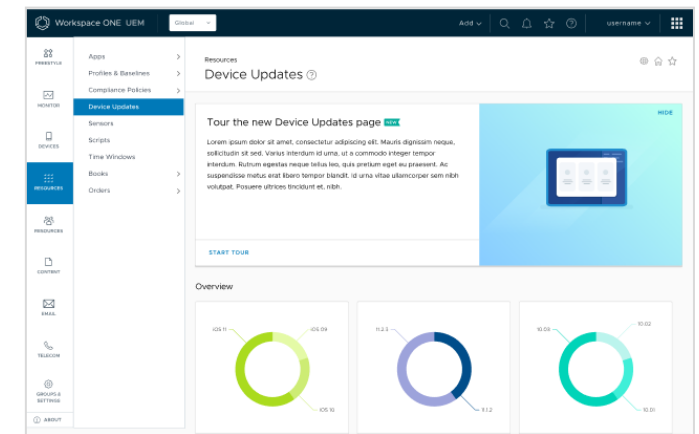
Richtlinien Modernisierung

- Data-driven UI
- Baselines and Profile Templates
- Manage & Audit policies
- “Declarative Management” framework



Applikationsmodernisierung

- Enterprise App Repository
- Vulnerability management integration
- Intelligent CVE driven patching
- Time Windows + User Experience



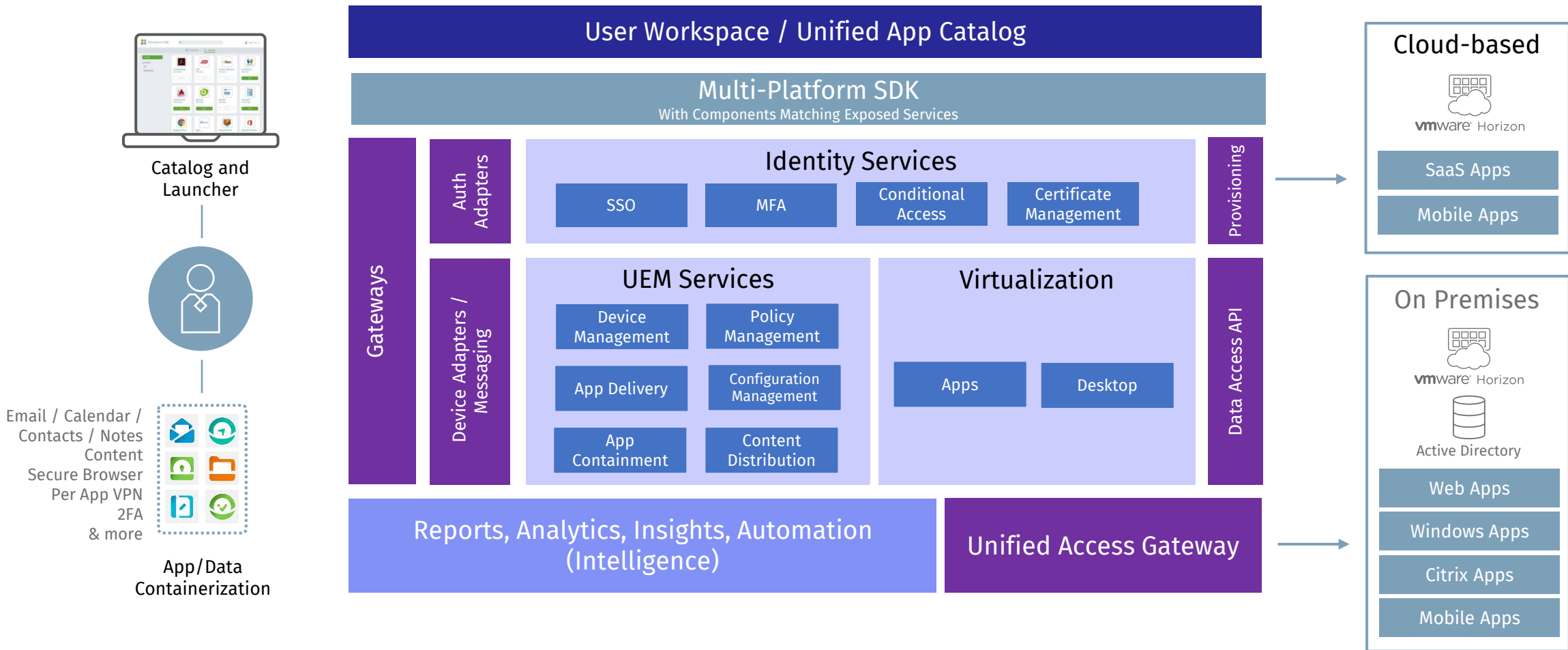
Patch Modernisierung

- Simplified updates catalogue
- Smart deployment rings
- Intelligent CVE driven updates
- Improved logging and visualization

Workspace ONE Architecture

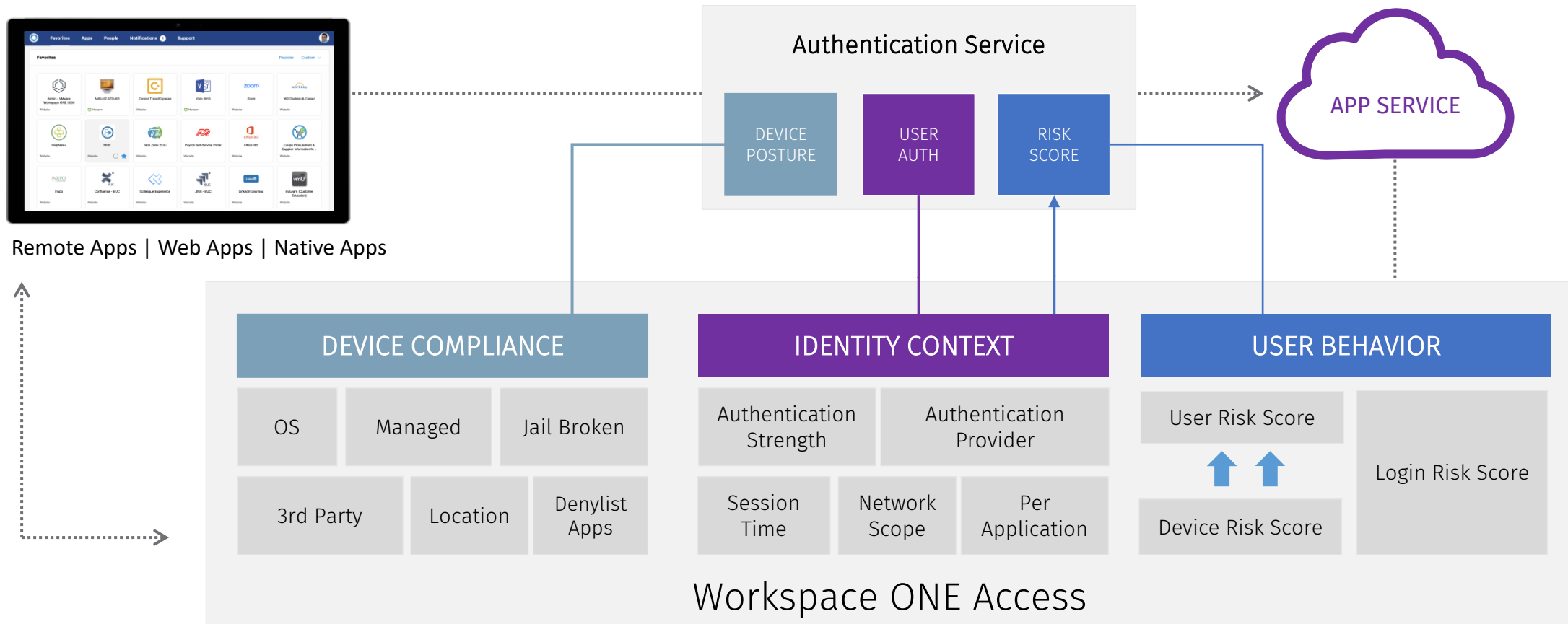
Any Device

Any Application



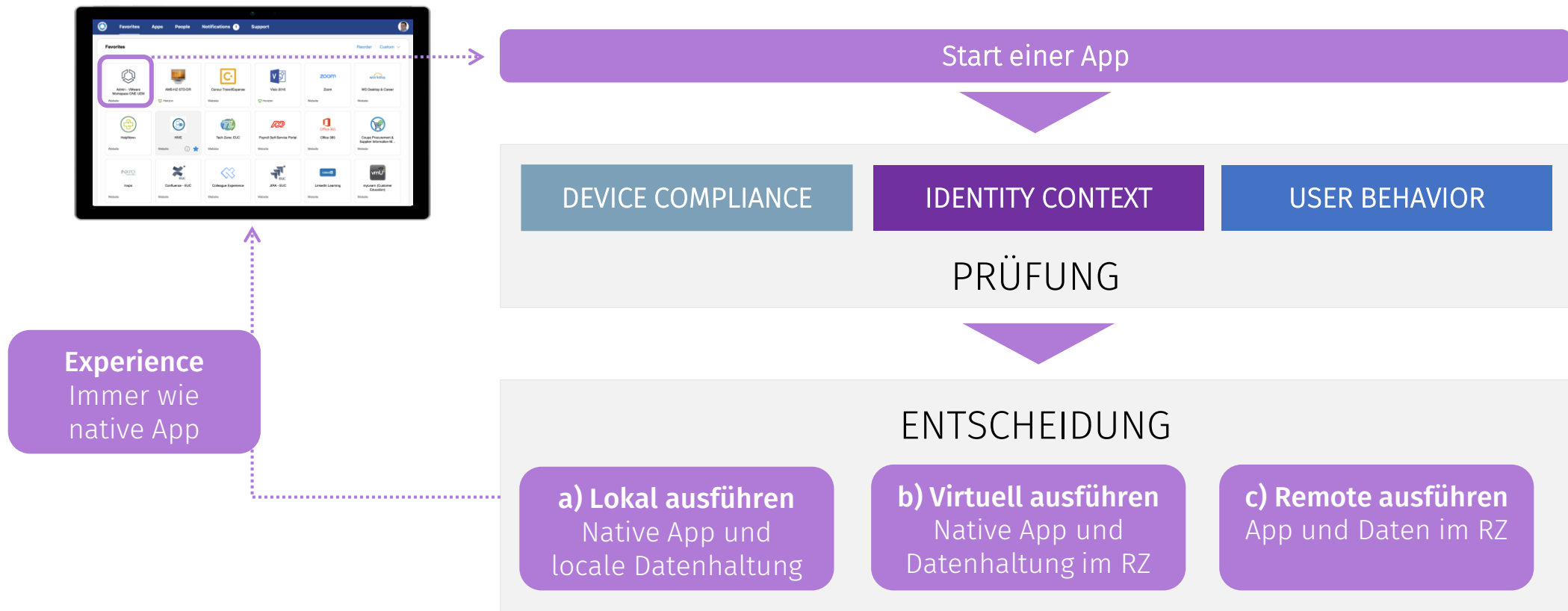
SSO und Workspace ONE-gekoppelte Authentifizierung

Wegweisende Integration von Identity, Device Compliance und User Behavior für Conditional Access

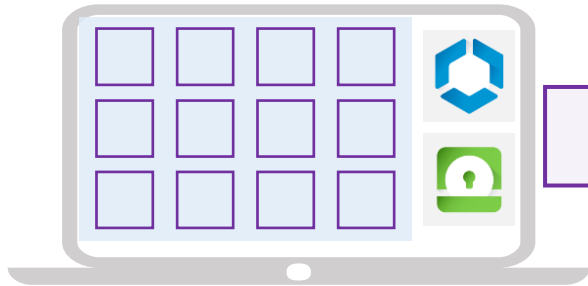


SSO und Workspace ONE-gekoppelte Authentifizierung

Wegweisende Integration von Identity, Device Compliance und User Behavior für Conditional Access

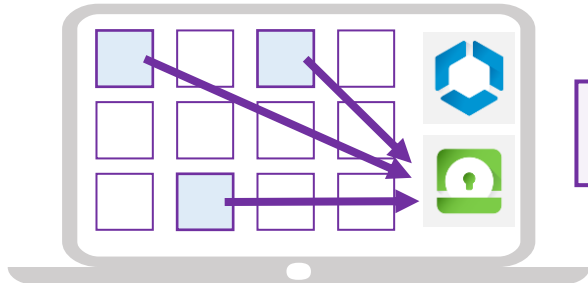


Secure Access - Tunnel Routing Modes



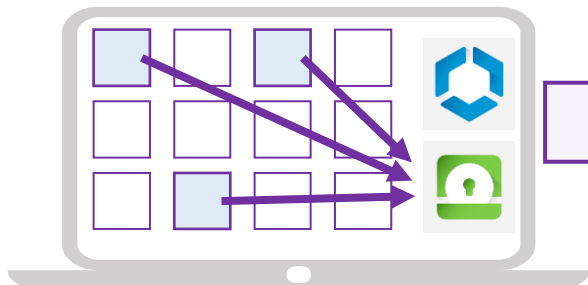
Full Device Tunnel Mode

most comparable to a traditional VPN where all user application traffic is sent over the Tunnel.

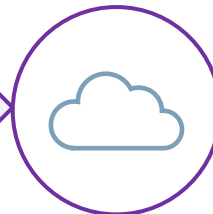


App Tunnel Mode (or Per-App Tunnel)

enhancement where an admin can specify what traffic from different apps will be sent over the Tunnel. This is valuable for security and privacy.



Split Tunneling

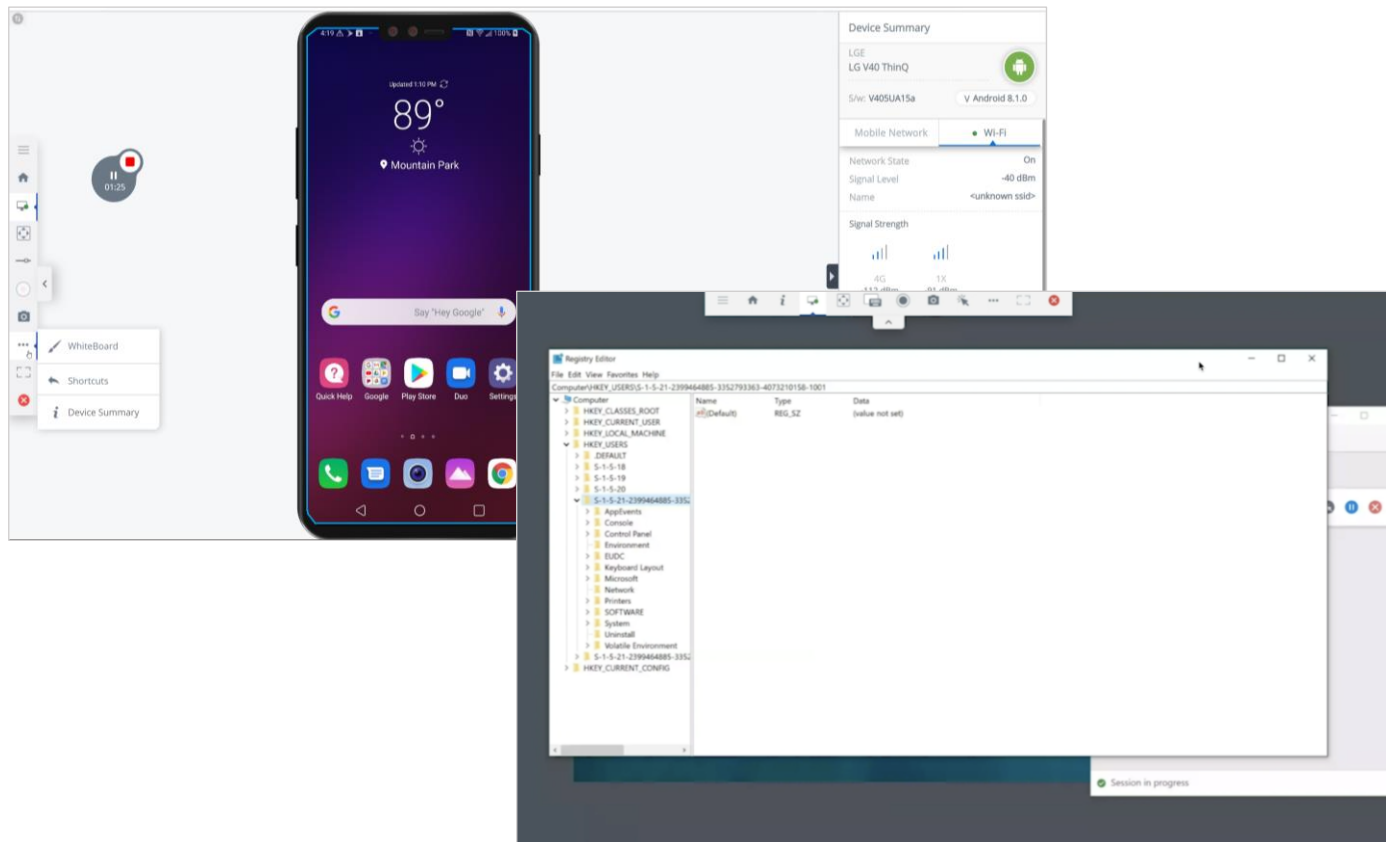


the ability to send specific destinations (sites/servers) over Tunnel but bypass other locations through the default gateway (internet).

You can do split tunneling in either App or Full Device modes.

Plattformübergreifender Remote Support mit Workspace ONE Assist

Support physical device issues from Workspace ONE console and virtual desktop issues from Horizon Universal console



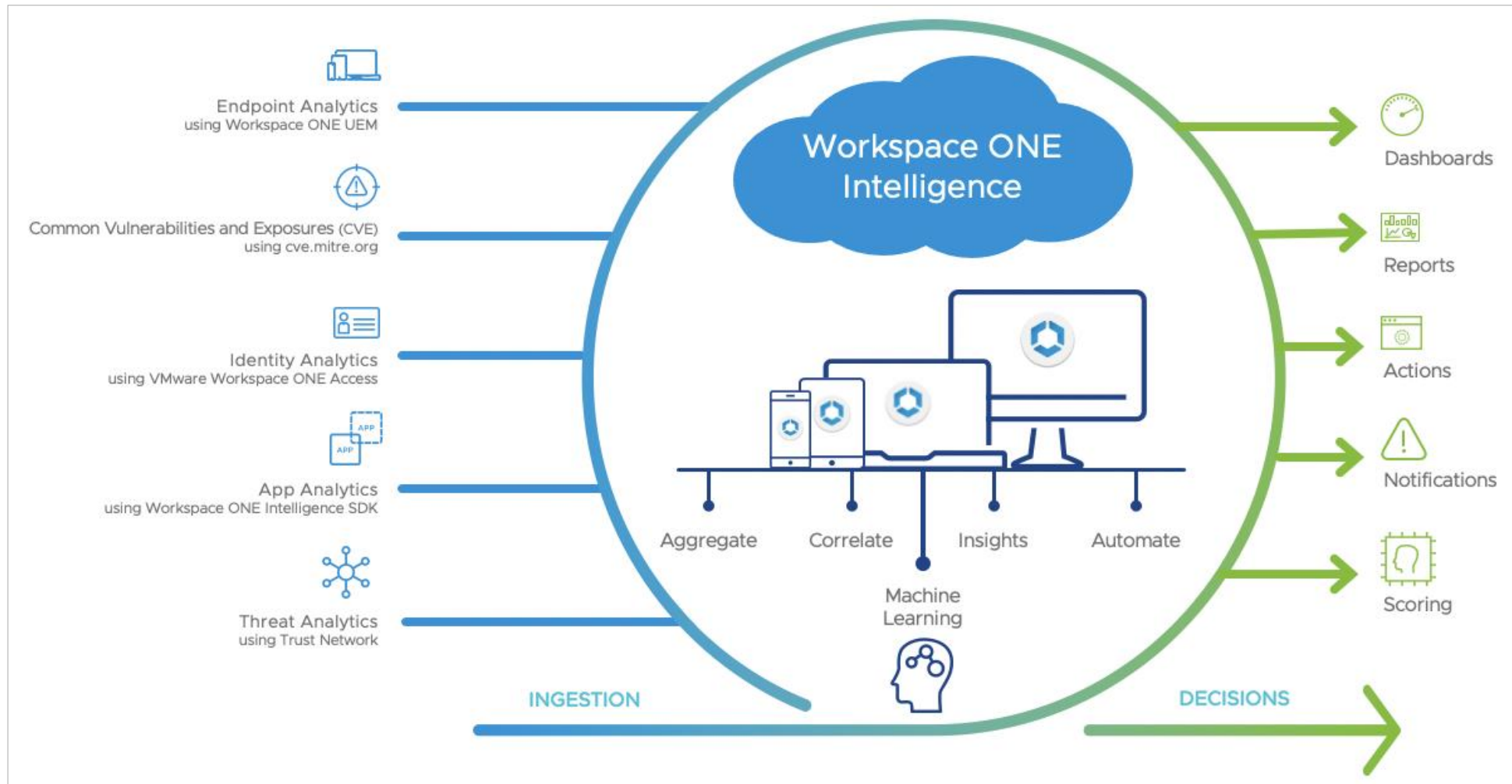
View or control devices remotely to quickly troubleshoot and fix issues

Screen Draw guide employees through various tasks and
Record remote sessions for training

Ensure privacy by notifying employees when their screen is visible and enable them to pause anytime

Informationsaufbereitung für gezielte Entscheidungen und Automatisierungen

Workspace ONE Intelligence – IT Entscheidungen automatisieren



Informationsaufbereitung für gezielte Entscheidungen und Automatisierungen

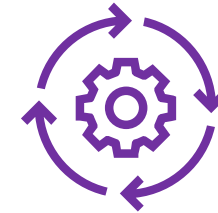
Workspace ONE Intelligence – IT Entscheidungen automatisieren



Integrated Insights: Get complete visibility into your digital workspace, enable data driven decisions across your entire environment.

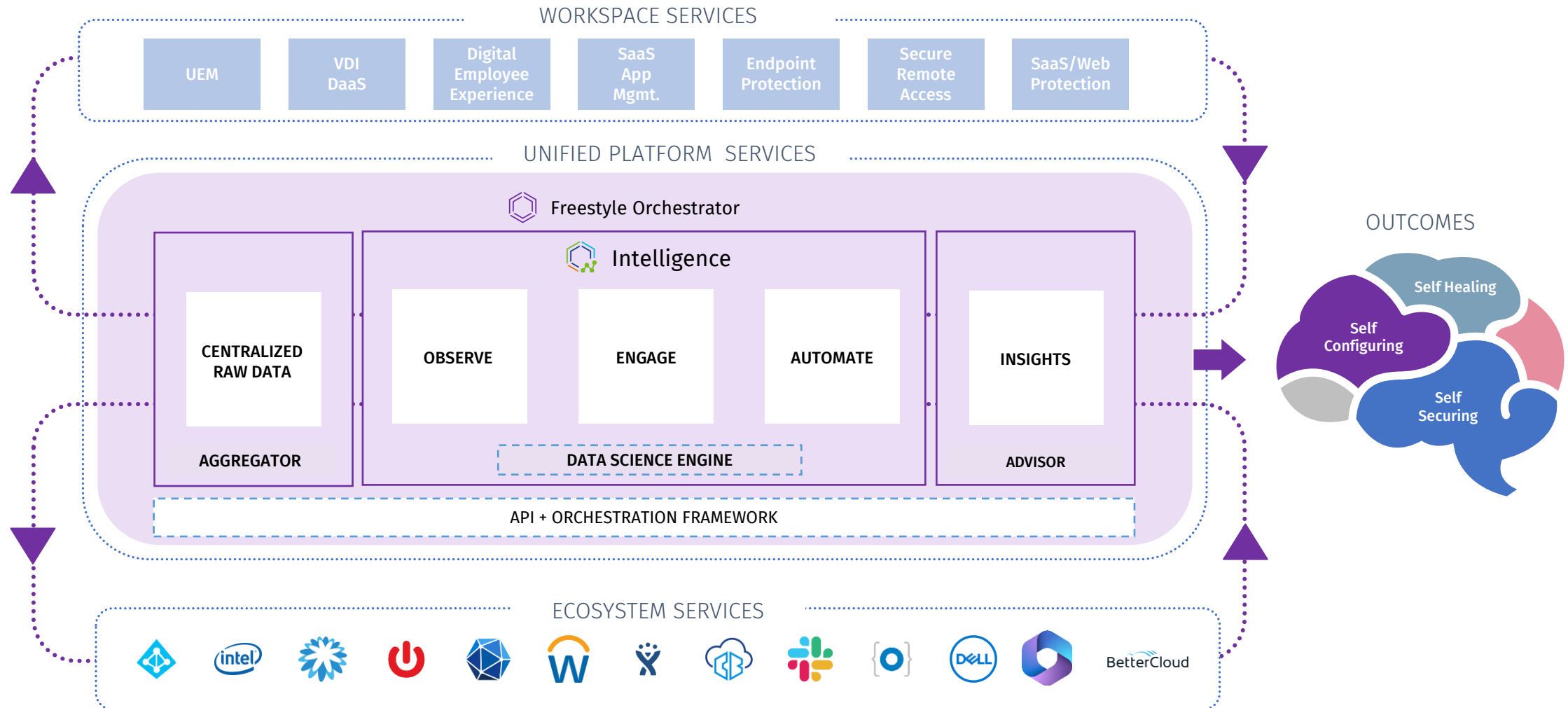


App and device Analytics: Proactively identify and quickly resolve issues, improve employee experience and engagement across the organization.



Powerful Automation: Automate processes to increase security hygiene across your environment, meet compliance requirements and increase productivity.

Autonomie für Ihre Endpoint Management Aufgaben



Erweitertes Metaverse and Workspace IoT Management



**SECURE
MANAGEMENT**



**LOW-TOUCH
ENROLLMENT**



**OVER-THE-AIR
CONFIGURATION**

FOR



Single-Purpose Devices

Interaktive Kiosks and
Digital Signage

> Single or Multi-App Mode and App
or Content Management



Peripherals

Mobile Drucker, Sprachassistenten
> Asset Tracking and Reporting



Wearables

AR, MR, and VR Head-Mounted
Displays

> App Lifecycle Management



ATHEER



EPSON

SAMSUNG



GLASS



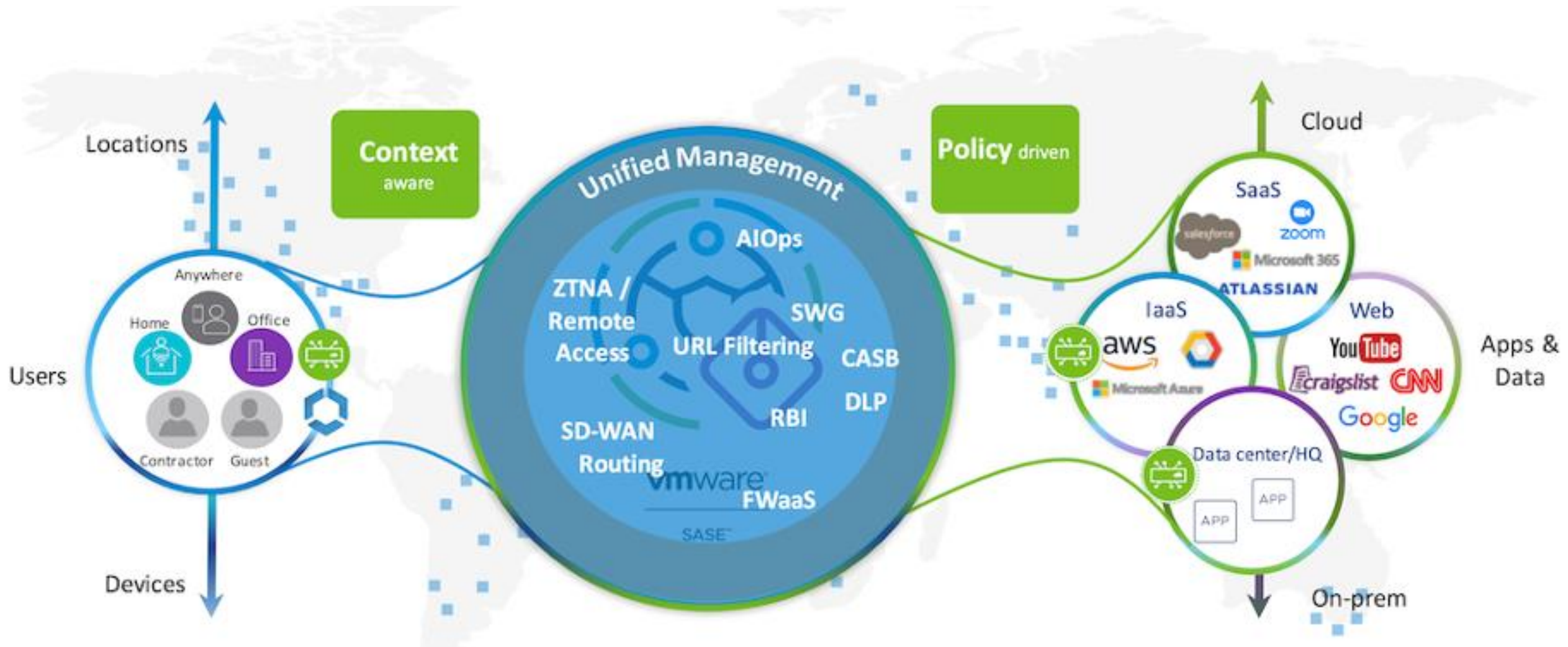
ODG

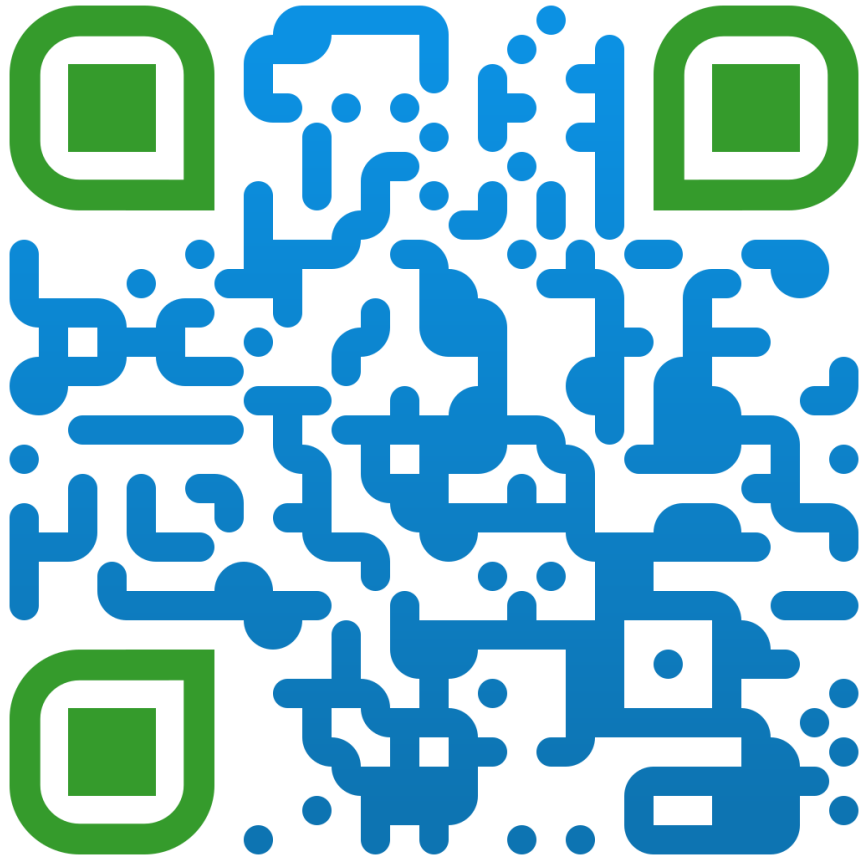
TOSHIBA



elo

Workspace Anywhere





Kontakt

Einfach QR Code scannen oder direkt an info@thegema.at mailen

Vielen Dank!



Your local provider for
global enterprise mobility