

ADV Data Excellence Award 2024

OMD Spatial Connector

11.-12. APRIL 2024 | PARK HYATT VIENNA





Our Team



Jürgen Zornig

DATA Lead

- 20+ years of experience in (meta)data
- Degrees in IT, Spatial and Data Science
- enthusiastic about Data Engineering, Data Quality and Open Source



Daniel Chenari

DATA Developer

- recent graduate with a keen interest in the transformative power of data
- eager to contribute and grow in the fields of Data Engineering and Quality



What we do

(not only GIS)

We make GeoSpatial & IoT solutions simple, fast, and affordable.



GeoSpatial

We empower public institutions to **extract valuable insights** from geospatial data.



IoT

We deliver a **Smart-Home-as-a-Service platform** for business customers.



Smart City

Our **CITY OPERATING SYSTEM** connects people, data and systems.

basemap .AT



Traffic



Flood prevention



Schedules



Public service



Energy management



Integrations



Hive

Snowflake

DBT

S3

Data
man
w



G

GC-API

rr

KML

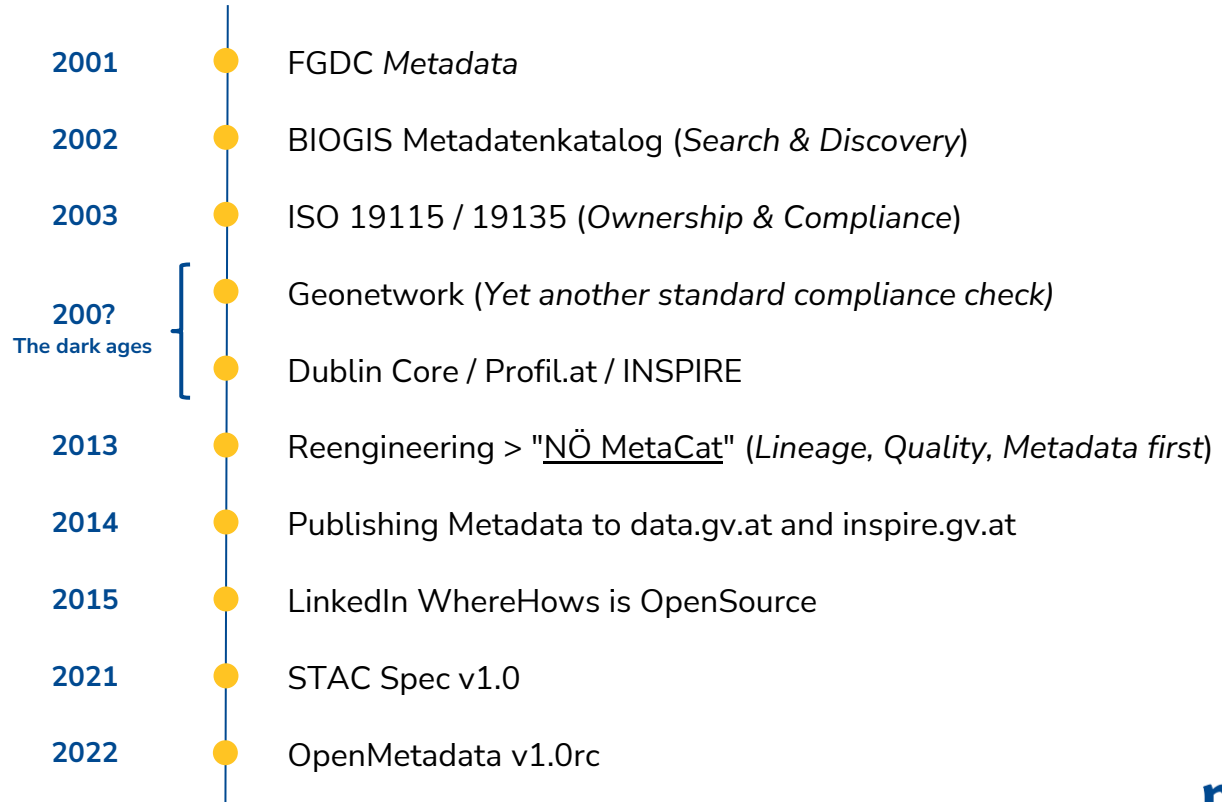
DXF

CSW



Metadata

My personal spatial data governance journey

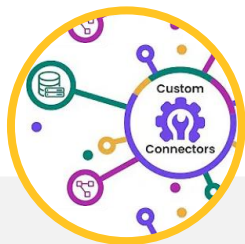


OpenMetadata



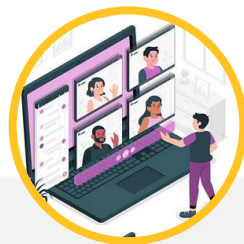
Platform

- Comprehensive Metadata schema
- User-friendly UI
- rock-solid integrations
- production-ready



Extensibility

- Custom Connectors and Airflow based backend
- Plugin Apps into UI
- Easy container-based deployment



Collaboration

- Externally through an active community
- Internally through features that support a healthy data culture



Solution Overview



Open
Metadata

Catalog
Lineage

Discovery
Quality

Governance
Collaboration



OMD Ingestion Framework

OMD Integrations



OMD SmartCity
Connector



OMD Spatial
Services/Pipelines/
Maps Connector



OMD Spatial Connector

VSI (virtual
Filesystem)



Disk I/O HTTP
S3 ZIP



SpatioTemporal
Asset Catalog



Key Benefits

Holistic data lifecycle management



Cover all your data during its complete **lifecycle**, from sensor collection to published information product and beyond.



Data Owners are able to **collaborate** on their very **own format specific assets** (no need for proxy assets).



Data Consumers get a **one-stop-shop** of really every data asset and its lineage, regardless of its format or origin.





Find us on GitHub / Roadmap

msgis/openmetadata-
spatial-connector



SCAN ME

Want to contribute?

- STAC connector

Contact us

What to expect next

- 2024 Spatial pipelines connector
- 2024 SmartCity connector
- 2025 Spatial dashboards (web/mobile maps)



Thank you!

Jürgen Zornig

✉ Juergen.Zornig@msgis.com